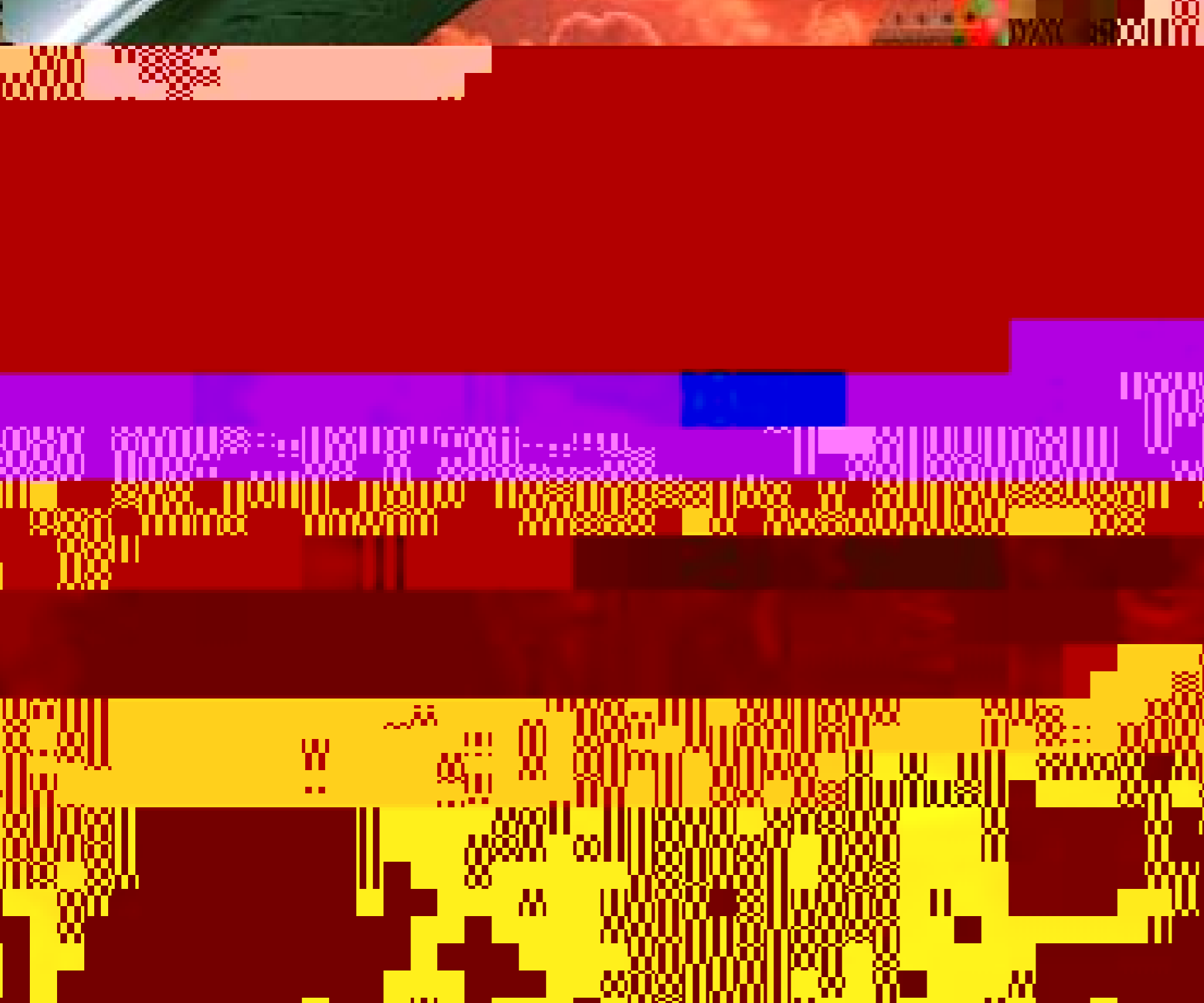
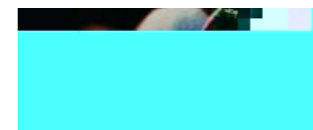
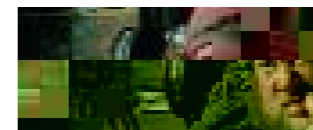


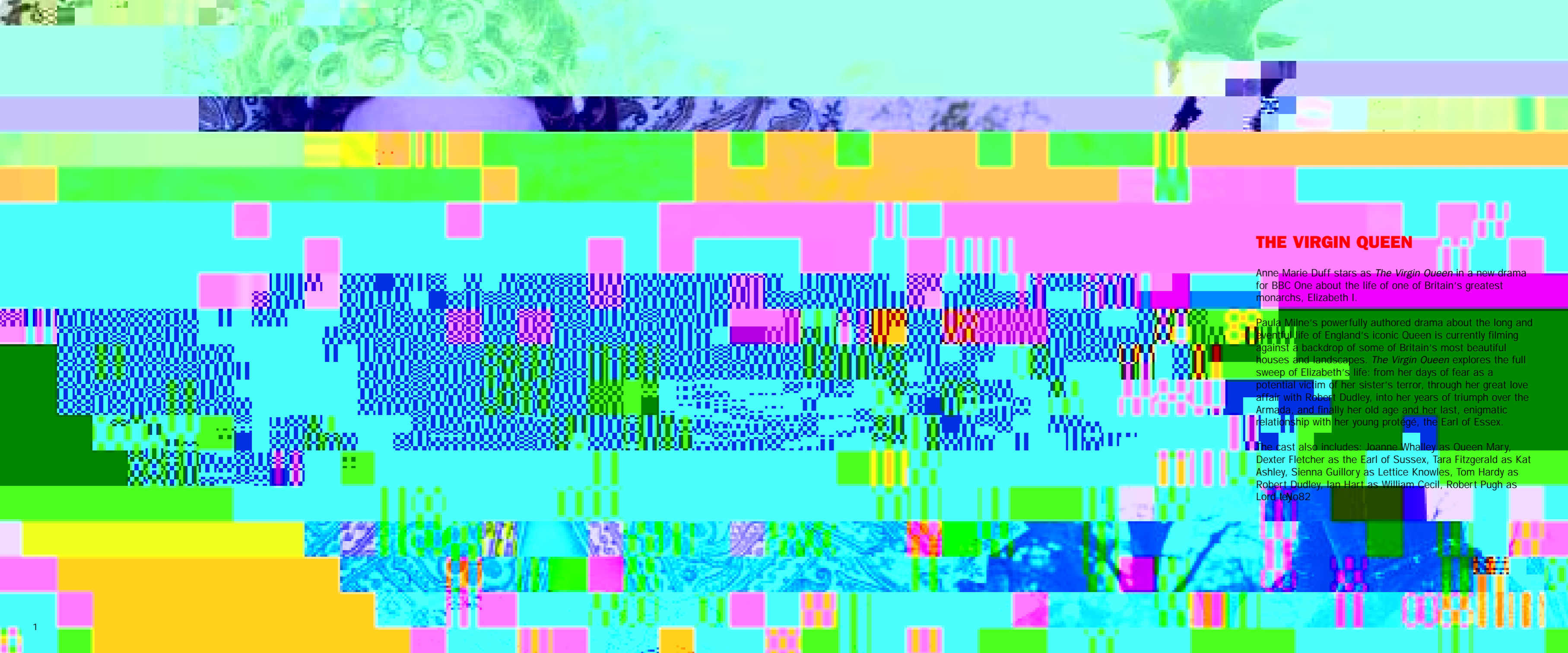
**BBC**

**AUTUMN 2005 HIGHLIGHTS**



## AUTUMN 2005 HIGHLIGHTS



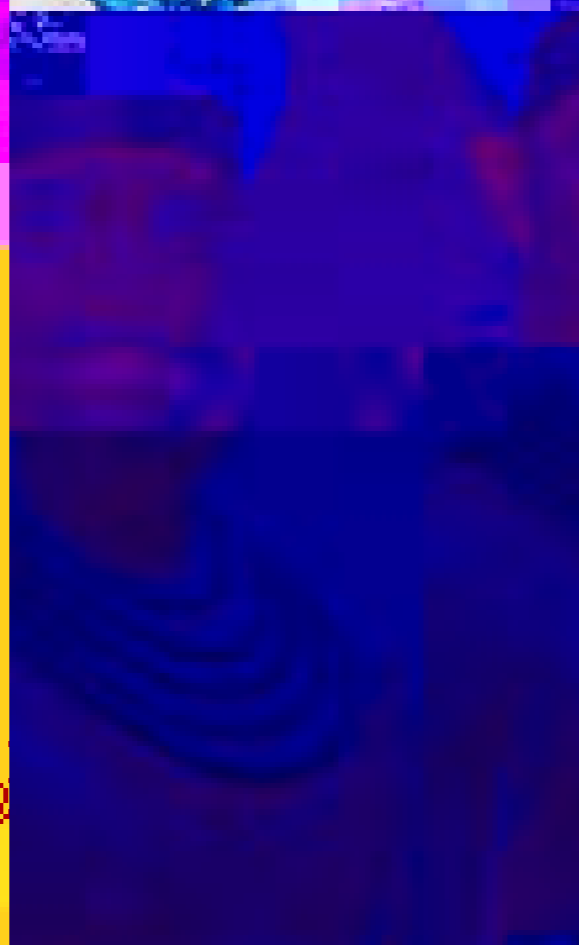


## THE VIRGIN QUEEN

Anne Marie Duff stars as *The Virgin Queen* in a new drama for BBC One about the life of one of Britain's greatest monarchs, Elizabeth I.

Paula Milne's powerfully authored drama about the long and eventful life of England's iconic Queen is currently filming against a backdrop of some of Britain's most beautiful houses and landscapes. *The Virgin Queen* explores the full sweep of Elizabeth's life: from her days of fear as a potential victim of her sister's terror, through her great love affair with Robert Dudley, into her years of triumph over the Armada, and finally her old age and her last, enigmatic relationship with her young protégé, the Earl of Essex.

The cast also includes: Joanne Whalley as Queen Mary, Dexter Fletcher as the Earl of Sussex, Tara Fitzgerald as Kat Ashley, Sienna Guillory as Lettice Knowles, Tom Hardy as Robert Dudley, Ian Hart as William Cecil, Robert Pugh as Lord



## EGYPT

In a major new landmark series, BBC One dramatises the story of the people who first uncovered Ancient Egypt for the modern world. The series tells of the intrepid adventurers, archaeologists and explorers who travelled through Egypt in the 19th and 20th centuries, igniting a fascination with Egypt that has been burning ever since.

The ancient and modern are woven together in this spectacular series. The first story tells of the adventures of Howard Carter, who was responsible for finding the tomb of Tutankhamun, the boy king who died mysteriously at the age of 18. Another story is about "The Great Belzoni" a jack-of-all-trades and die-hard adventurer, and Ramesses II, possibly the greatest Pharaoh of them all, who ruled Egypt for over 60 years. And finally, the series uncovers Jean-Francois Champollion's struggle to understand and save a lost civilisation; the young French genius cracked the code of the hieroglyphs and brought back the knowledge of an ancient and mysterious faith that had been lost to the world for 3,000 years.

Filmed on location in Egypt, the series also focuses on the story of the Ancient Egyptians – whose secrets and belongings the adventurers were so desperate to uncover.

RI/EF

Hieroglyphic script remained a mystery for an incredible 1400 years. Champollion, the Frenchman who eventually cracked hieroglyphs, could speak seven languages at the age of 13; including Latin, Greek

Two unborn baby girls were found in Tutankhamun's tomb. They had been mummified and placed in tiny coffins. The hair, eyelashes and eyeballs were still preserved. They are thought to be the daughter of Tutankhamun, and his wife, who miscarried at five and seven months.

Lord Carnarvon – Howard Carter's sponsor and friend – died from an infected mosquito bite on his cheek. When the gold death mask of Tutankhamun was lifted, he too died.

Prudish Victorian Egyptologists deliberately destroyed the rude parts of paintings on temple walls to avoid them corrupting others.

## GREEN GREEN GRASS

*Coronation Street* favourites Boycie and Marlene start a fresh life in Shropshire in John Sullivan's new sitcom.

Boycie (John Chalky) is on the run from the infamous Driscolls so he ups sticks with his reluctant wife, Marlene (Sue Holderness), and recalcitrant son, Tyler (Jack Dodlan) to a secluded farm in the country.

Looking for peace and a quiet life, Boycie is horrified to discover that the farm comes with three employees, but he's not as horrified as Marlene when they convince him that he'd make the perfect gentleman farmer. And then he buys a bull.

John Sullivan says: "When I was writing *Coronation Street*, I often used to wonder what Boycie and Marlene were like when they were at home together, alone. And now I've had the chance to find out!

"They're like lots of married couples – constantly bickering and trying to hide their little secrets but, deep down, they love each other.

"Inevitably, Boycie is better suited to the country as being a gentleman farmer appeals to his ego, and he's not afraid to try anything once, but Marlene finds the transition more difficult. Stilettoes weren't made for tramping across fields!

EW

## THE STORY

Terry Jones takes viewers on a numerical mystery tour in *The Story of Numbers*, as he retraces the rise of the number one and its extended family.

Numbers have elevated us to our greatest achievements and, as Terry Jones relishes showing, at times they have inspired our greatest stupidities. From the Greek terror of infinity to the time the Catholic Church tried to ban zero, this



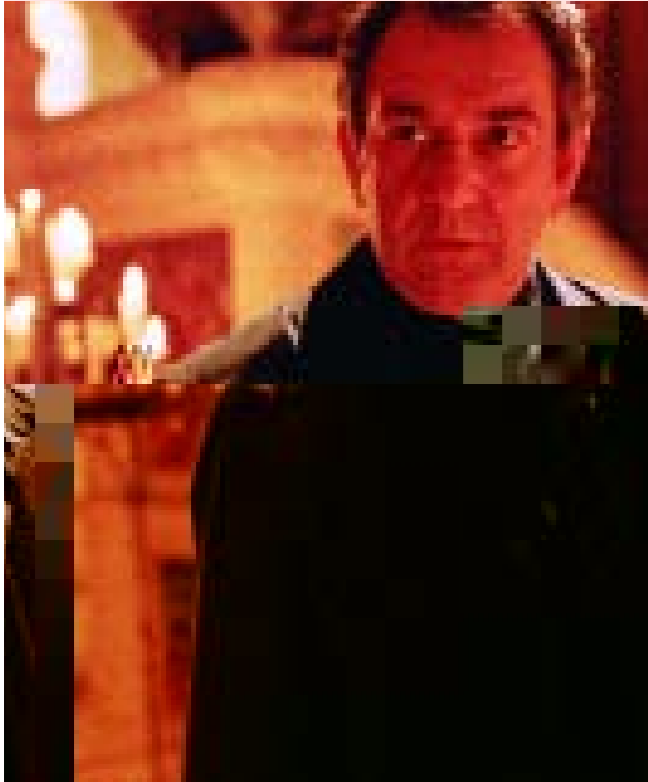


10

## MESSIAH

Red Metcalf and his team are up against time when a suspected serial killer embarks on a gruesome murder spree in this gripping series of *Messiah*.

As the body count continues to rise, Red becomes



## SPY

A high-octane two-part feature-length special launches the return of critically acclaimed Bafta, RTS and TRIC award-winning *Spy* for a new season this autumn on BBC One.

MI5's crack team of spies was left reeling after the shocking death of Danny at the hands of hostage-takers as the last series concluded. Now Adam (Rupert Penry-Jones), Harry (Peter Firth), Ruth (Nicola Walker), Fiona (Olga Sosnovska) and rising star Zafar (Raza Jaffrey) set out to become even stronger in their battle to safeguard the nation.

The fourth series opens with an action-packed special which leaves MI5 with only 48 hours to prevent a catastrophe. Adam faces one of the most difficult choices of his career: in order to save a hospital from devastation, will he be forced to let a brave and innocent young woman die?

The special, directed by Antonia Bird, introduces Anna Chancellor as Juliet Shaw, National Security Co-ordinator and Harry's nemesis – and also a figure from his past; and also guest stars Martine McCutcheon in her first UK TV role since leaving *EastEnders*. Guest artists starring in the series include Rupert Graves, Jimi Mistry, George Baker and David Threlfall, and there are return appearances from Hugh Simon and Rory Macgregor.

JP







## **JOURNEY TO THE HEART OF THE TSUNAMI**

In an attempt to understand the devastating wave that shocked the world on Boxing Day 2004, *Journey To The Heart Of The Tsunami* accompanies an expedition of top scientists as they explore the seabed site of the catastrophe.

Sending cameras deep into the abyss to witness first hand

# LIFE IN THE UNDERGROWTH

Just when you thought there was no more of the natural world left to film, Sir David Attenborough returns to TV screens in a landmark new series revealing that he has yet to film most of the animals in the world.

Although they are all around, these creatures' lives often go virtually unnoticed. Now, using the latest technology, BBC One takes viewers into their world to discover the amazing stories of the most successful creatures on Earth: the invertebrates. Cameras capture not just bugs, beetles, spiders and scorpions, but also the most amazing butterflies, dragonflies and a host of incredible creatures never before seen on television.

The invertebrate world is one of magnificent spectacles. David takes viewers to Taiwan to see swarming purple Crow

butterflies, to Africa to witness an army of Matabele ants raid a termite colony, and to North America in time for the great emergence of 17 year cicadas. It's a series of incredible colour and beauty such as iridescent butterflies and rainbow spider webs.

Just over 400 million years ago, creatures left the seas to move on to what was then a barren and lifeless land. Since that first foothold, the invertebrates have dominated every part of the Earth and the air with their numbers and diversity. For every human, there are 200 million of them. Night vision cameras, thermal cameras and tiny lenses allow Attenborough to investigate behaviour that is normally invisible to the human eye and reveal breathtaking stories, many of which are new to science.

*Life in the Undergrowth* has been a passionate project for Sir David Attenborough and a series that he has wanted to make for a long time: "The tiny creatures of the undergrowth were the first creatures of any kind to colonise the land.

They established the foundations of the land's ecosystems and were able to transcend the limitations of their small size by banding together in huge communities of millions. If we and the rest of the back-boned animals were to disappear overnight, the rest of the world would get on pretty well. But if the invertebrates were to disappear, the land's ecosystems would collapse.

Wherever we go on land, these small creatures are within a few inches of our feet – often disregarded. We would do very well to remember them."

Invertebrates have always dominated "our" world. Now, for the first time, we can enter theirs.

DC

NE IS RA LING WITH INSIGHTS INTO  
INSECTS THIS AUTUMN HERE ARE SOME  
BIG AS A BUT TINY CREATURES

ABOUT 35,000 SPECIES OF  
SPIDERS ARE KNOWN AND  
MORE ARE BEING  
DISCOVERED EVERY DAY

THE SMALLEST FLYING  
INSECT IS THE FAIRY WASP  
WITH A LENGTH OF ONLY  
0.2MM. IT FLIES  
UNDERWATER, AS THE  
SERIES WILL SHOW

DRAGONFLIES ARE THE  
FASTEST FLYING INSECT IN  
THE WORLD, ATTAINING  
SPEEDS OF UP TO 36MPH –  
NO WONDER THEY WERE SO  
DIFFICULT TO FILM!

IN AN OLD FIELD IN SOUTH  
WALES, RESEARCHERS  
RECENTLY FOUND  
APPROXIMATELY ONE  
MILLION SPIDERS PER ACRE  
(2.5 MILLION PER HECTARE)

THE WORLD'S LARGEST  
SPIDER IS THE GOLIATH  
BIRD-EATING SPIDER WITH A  
BODY LENGTH OF 3.5  
INCHES, A LEG SPAN OF 11  
INCHES, FANGS MEASURING  
ONE INCH LONG AND A  
TOTAL WEIGHT OF 4.3OZ

THE LARGEST BEETLE IS  
NOW KNOWN TO BE THE  
TITAN BEETLE FROM THE  
AMAZON BASIN. IT IS UP TO  
7 INCHES (18 CM) LONG  
AND WILL APPEAR FOR THE  
FIRST TIME ON TELEVISION  
IN THIS SERIES

FOR EVERY POUND OF  
PEOPLE ON EARTH THERE  
ARE 300 POUNDS OF  
INSECTS

TERMITES INVENTED AIR  
CONDITIONING FOR THEIR  
MOUNDS MILLIONS OF  
YEARS AGO. L  
BUT T  
G  
R R T GOES  
INSIDE A MOUND TO SEE  
HOW IT WORKS



## ARRIE ARRY

Neil Morrissey, Claire Rushbrook, Mark Williams and Michelle Gomez star in Simon Nye's comedy *Carrie Barry*, which returns for a brand-new series this autumn

It's a time of great change: Barry has lost his taxi licence, which throws the cat among the pigeons as he sets out to find another source of income and generally reinvent himself

# LEATH USE

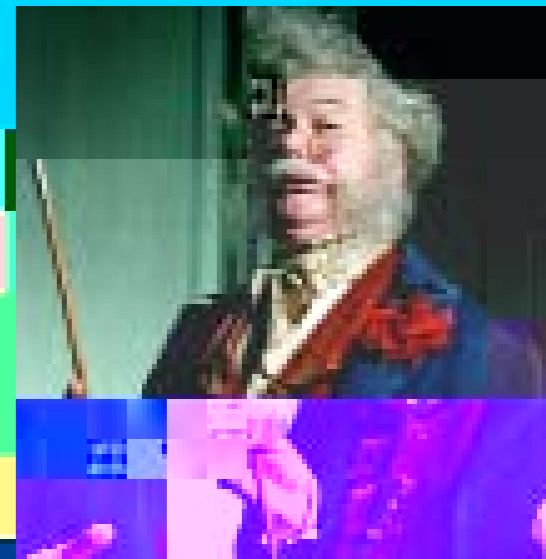
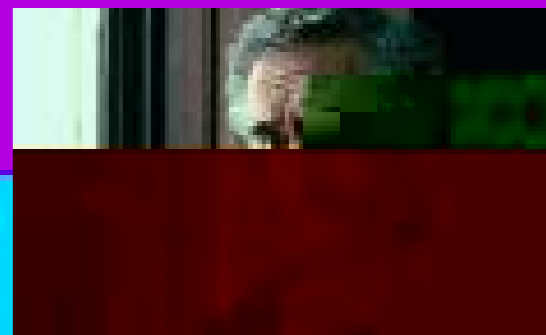
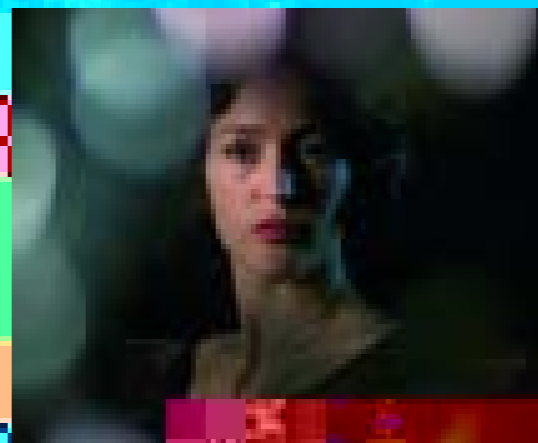
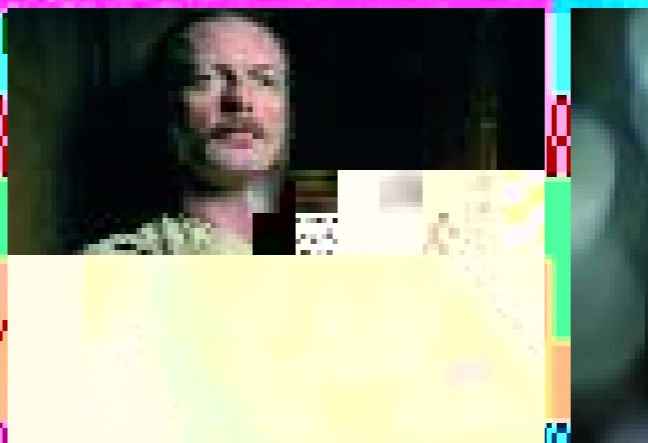
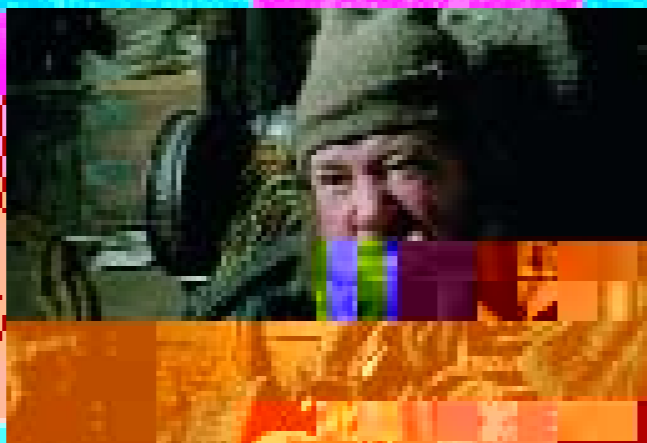
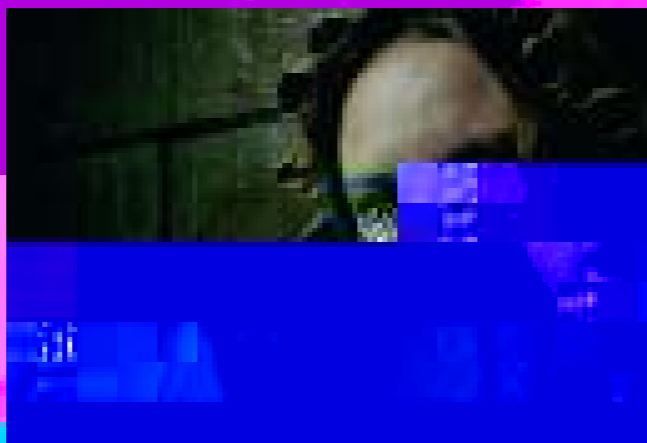
Gillian Anderson, Denis Lawson, Charles Dance, Alistair McGowan, Pauline Collins and Johnny Vegas lead a star cast in a groundbreaking adaptation of Dickens's *Bleak ou e* written by Andrew Davies.

The skilfully crafted thriller and passionate indictment of the legal system is one of Dickens's most celebrated achievements. Dickens wrote *Bleak ou e* as a monthly serial for popular consumption, complete with cliff-hanger endings that left his audience fervent for the next instalment.

Davies's adaptation is told in a series of half-hour episodes to be shown twice weekly using the pace, multiple storylines and cliff-hanger endings more usually associated with popular drama. This never-been-done-before adaptation of a timeless tale gives a fuller rendering of the book that is not normally achievable in a classic adaptation.

The story revolves around orphan Esther Summerson (Anna Maxwell Martin), companion to Ada and Richard, the Jarndyce wards of court, whose connection to the aloof yet beautiful Lady Dedlock (Gillian Anderson) may bring ruin to both her and Jarndyce (Denis Lawson).

Charles Dance is the merciless lawyer Tulkinghorn, who seeks to uncover Lady Dedlock's dark secret. Johnny Vegas plays Krook, the drunken, sly shop owner/landlord; Alistair McGowan plays Jarndyce's lawyer, Kenge; and Timothy West is Sir Leicester Dedlock. Alun Armstrong, Hugo Speers, Liza Tarbuck, Charlie Brooks, Matthew Kelly, Richard Harrington, Nathaniel Parker, Warren Clarke, Anne Reid, Richard Griffiths, Phil Davis and rising stars Carey Mulligan and Patrick Kennedy also star.





## MARRIAGE THE GLEN

New beginnings and happy endings come calling as feel-good drama *Married... The Glen* experiences its final Highland fling.

The seventh, and final, series sees the MacDonald family face the ultimate battle – to ensure the Glenbogle estate survives in an ever-changing world. As well as *Married* favourites Susan Hampshire, Lloyd Owen, Sandy Morton, Tom Baker, Rae Hendrie and Martin Compston, this series sees the arrival of Kirsty Mitchell as feisty shepherdess Iona MacLean and Kellyanne Farqhar as Amy, the laird's god-daughter.

Bringing to a close some of the best-loved stories, the final series also sees the return of familiar faces from Glenbogle's past, including Hamish Clark, Julian Fellowes and a spirited return from Richard Briers as Hector MacDonald.

JW

## THE FIRST EYE MY LIFE

Having finally made it down the aisle after the worst week of his life, it seems as if things are finally going well for Howard. He and Mel are about to move into a new home together and they are expecting their first child. It seems for once everything is perfect. But seven days in the life of Howard Steel are never simple...

The first series witnessed the week leading up to Howard and Mel's wedding in which he managed to: lose the wedding ring; knock out the best man; molest his future mother-in-law; hospitalise his fiancée's grandmother; throw the in-laws' dog into a cement mixer; and was accused of impregnating an office colleague. Moving house and becoming parents should prove challenging for the Steels...

Following the critically acclaimed first series, *The First Eye - My Life* stars Ben Miller, Sarah Alexander, Alison Steadman, Geoffrey Whitehead and Janine Duvitski. It is written, produced and directed by Justin Sbresni and Mark Bussell.

KC



## BRING THE TEAM

Emmy award-winning series *Bring The Team* returns for a new series of two-part films.

Trevor Eve, Sue Johnston and Wil Johnson return along with new recruits Esther Hall and Félicité du Jeu.

Following the tragic death of former colleague DS Mel Silver (Claire Goose), Frankie (Holly Aird) has left the team to return to research and Felix (Hall), a bright, strong, somewhat altruistic and objective pathologist, has stepped into her shoes.

The team is finding it extremely hard to come to terms with Mel's death and finding a replacement is proving to be a heartbreaking challenge.

However, when Stella, a dedicated, ambitious DS, arrives for an interview, it seems she may have what it takes to be member of this close-knit team.

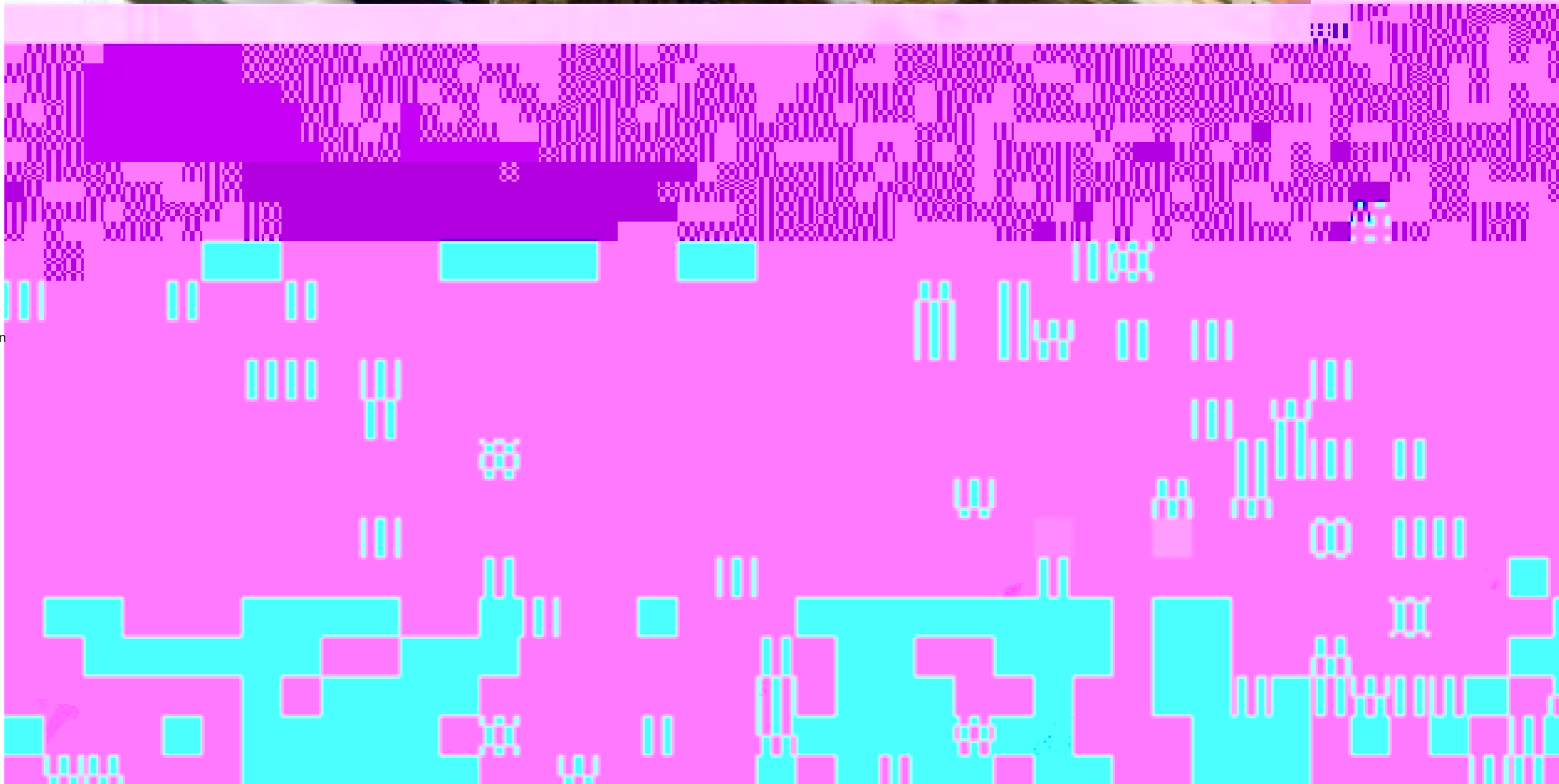
Using advanced techniques in forensic science, the Met's crack squad of experts gets under the skin of some tough "cold cases" to discover the truth. Boyd's (Trevor Eve) team of devoted professionals often takes risks in order to bring the perpetrators to justice.

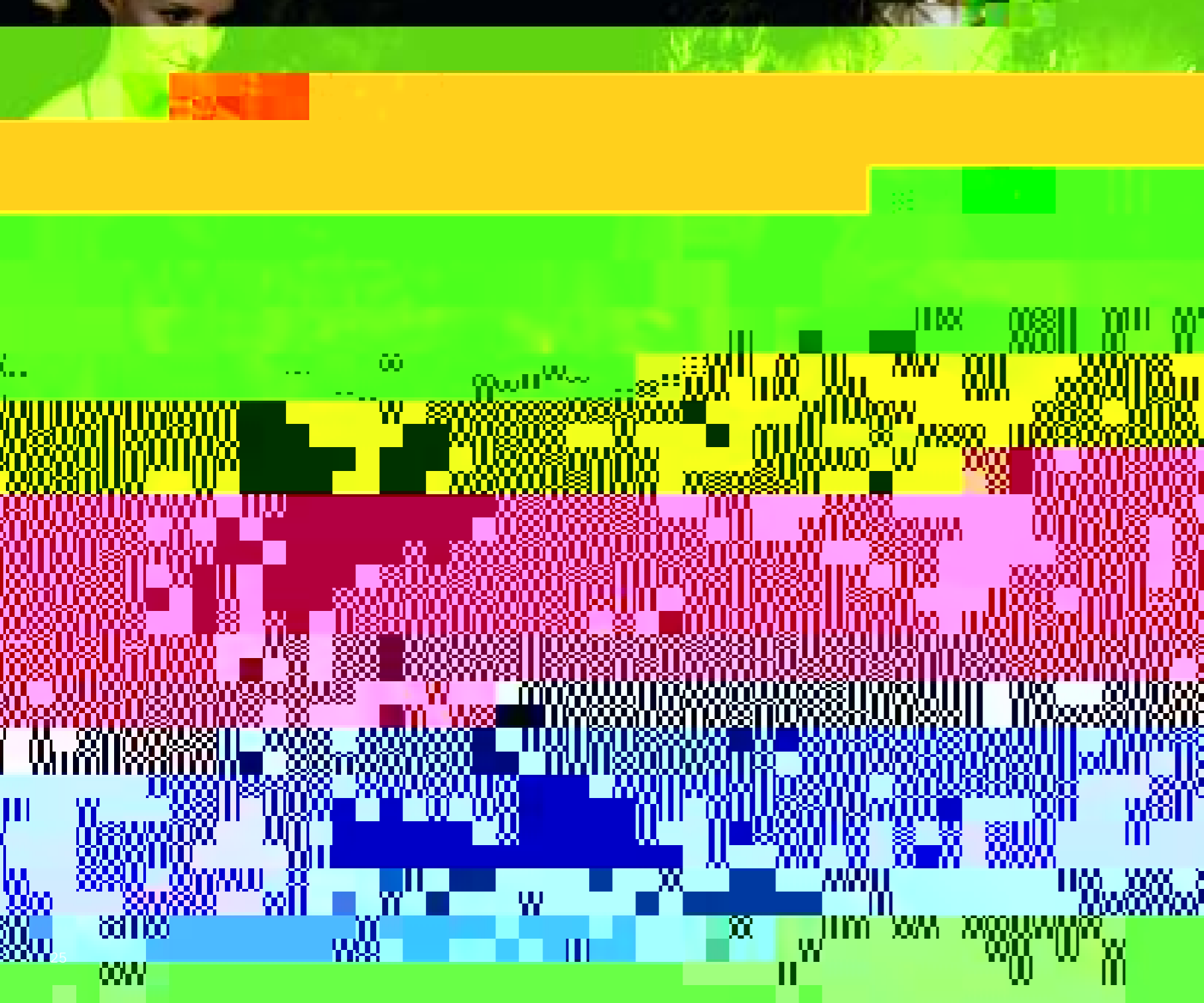
Guest stars include: David Walliams, David Hayman, Nicola Stephenson, Ayesha Dharker, Toby Stephens and Paul Freeman.

CP

## LITTLE BRITAIN

With more awards tucked beneath its laydee's petticoats than Bubbles has rolls of fat, the time has come once again





Shakespeare's reputation as a dramatist and poet is unique. Considered by many to be the greatest playwright of all time, Shakespeare's plays have merited translation and performances in cultures far removed from medieval England. The universality of his themes – love, marriage, death, guilt, separation, reunion and reconciliation to name but a few – gives his work a continual freshness and relevance. They also help us to understand what it is to be human.

This autumn, the BBC is celebrating Shakespeare with a variety of programmes and initiatives across its services – television, radio and online – in an attempt to rediscover the Bard, explore his work in original ways and investigate his life story and the mythmaking that surrounds him.

The centrepiece of this celebration will be four modern interpretations by some of Britain's leading television writers for BBC One.

Shirley Henderson plays Kate opposite Rufus Sewell's Petruchio in Sally Wainwright's version of *The Taming of the Shrew*. Vitriolic, aggressive and "shrewish", Kate is an opposition MP who is instructed to find herself a husband to make her more electable. Twiggy Lawson, Stephen Tompkinson, David Mitchell and Jaime Murray also star in the romantic comedy which explores the complexities of relationships against a backdrop of glamorous London circles and politics.

In David Nicholls's *Much to Be Done*, Sarah Parish plays Beatrice, presenter of a popular early evening regional news show whose ex-lover and arch enemy, Benedick, played by Damian Lewis, is hired as her co-anchor. Billie Piper plays weathergirl Hero.

Peter Moffat's *Macbeth* is transposed to the enclosed and heated world

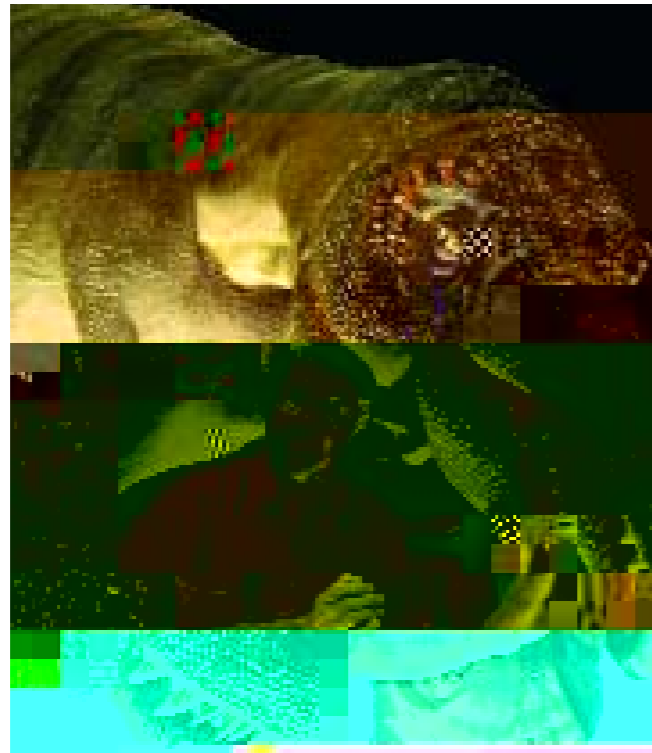
## STEPFAMILIES

One in 10 families in the UK is a stepfamily and the figure is rising, with more than two million children in stepfamilies.

A new BBC series gets to the heart of five stepfamilies to explore the problems and the challenges. Suzie Hayman – a Relate-trained counsellor specialising in stepfamilies – has just six weeks to work with each family to see if she can identify their problems and help them tackle any conflict.

Suzi explores issues, which will be familiar to stepfamilies across the country, ranging from coping with exes to merging different family units together.

HM



## THE TRUTH ABOUT KILLER DINOSAURS

They have the scariest reputation of all the creatures that have lived on Earth and now, in a series hosted by Bill Oddie, viewers can finally learn the truth about some of the world's greatest beasts and their awesome physical power.

*The Truth About Killer Dinosaurs* is the ultimate clash of the titans in which the giants of pre-history, recreated and pitched against each other, will engage in mortal combat, using the most accurate and naturalistic CGI "dino-animation" ever seen. The series harnesses new research and gives a fresh perspective on how the most ferocious killers in history really lived and died.

KC

## LOVES UP

Starring Tamsin Greig, Michael Landes and Trudie Styler, *Loves Up* is a romantic comedy-drama series by the creator of *One Tree Hill*, David Renwick.

Today, statistics show that the UK is a nation of people dragging their feet over settling down. People are getting married later – in 1991 the average age was 25, now it is 30. More people are living alone – 41 per cent of women over 16 are neither married nor cohabiting. And by 2011, the prognosis is that over 50 per cent of all men and women will never marry. So if more and more people are waiting longer and longer to meet their soul mate, what is happening in their love lives in the meantime? And what are their prospective partners getting up to in theirs?

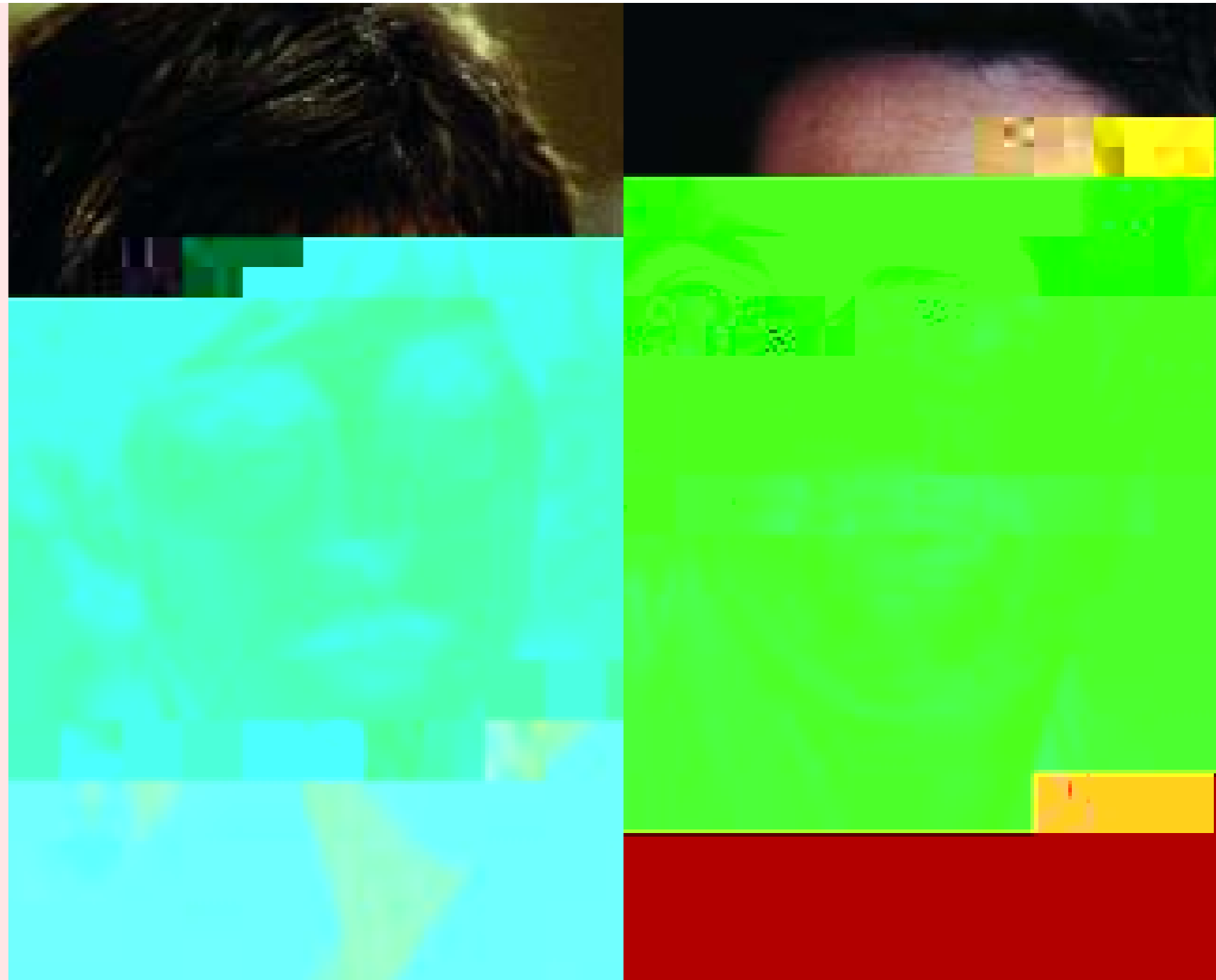
*Loves Up* looks at what happens when your first love is a distant memory but you haven't yet found "the one". Dealing with the parallel lives of a perfectly matched couple who have yet to meet each other, the comedy-drama follows their hopes, fears and dating disasters as they try to remain sane in a world from which they each feel increasingly excluded.

Tamsin Greig (*Teenling*, *Bac Boo*) plays Alice Chenery, an account manager for a perfume company in a London department store, struggling to maintain a flat in Brighton she cannot afford. Michael Landes (*The One*, *Year*, *The Prince & the Bear*) plays Gil, a successful American comedy writer who has fled his home country in search of artistic integrity and a lasting relationship.

Each week, *Loves Up* shows their continuing doomed attempts to find the definitive partner who will bring them the happiness they deserve. Will fate ever put them together? Since when has fate ever been kind?

Trudie Styler is Gil's neighbour, Irene, and Sheridan Smith plays Cleo, one of Alice's colleagues and unofficial matchmaker on the perfume counter.

SA/JD





## THE LAST TOMMY

The Great War of 1914-18 wiped out millions of young men. Many of those who made it home to Blighty never spoke of the horrors of the trenches. Now, of the five and a half million British and Commonwealth servicemen who fought, just a handful remains. *The Last Tommy* follows the six surviving British veterans, all over 100, and all that's left of the brave band of brothers, as they tell their stories for the last time.

Harry Patch had tried to forget the horrors, including the loss of all but two of his entire platoon of 30, in a war in which witnessing terrible and painful death was

14 7 HOURS ON BOXING DAY / A DIVERSE PRODUCTION	29 LAST TOMMY, THE / A QUICKFIRE MEDIA PRODUCTION	25 SHAKESPEARE / A BBC FILMS PRODUCTION
19 BLEAK HOUSE / A DEEP INDIGO PRODUCTION IN ASSOCIATION WITH BBC DRAMA	15 LIFE IN THE UNDERGROWTH / A BBC/OU CO-PRODUCTION	11
18 CARRIE & BARRY / A HARTSWOOD FILMS PRODUCTION	23 LITTLE BRITAIN / A BBC PRODUCTION	
18 CHILDREN IN NEED / A BBC PRODUCTION	27 LOVE SOUP / A BBC PRODUCTION	
03 EGYPT / A BBC PRODUCTION	11 MESSIAH / A GREAT MEADOWS PRODUCTION	
05 GREEN GREEN GRASS / A SHAZAM PRODUCTION	21 MONARCH OF THE GLEN / A BBC PRODUCTION	
14 JOURNEY TO THE HEART OF THE TSUNAMI / A DARLOW SMITHSON, DISCOVERY AND PROSIEBEN PRODUCTION	29 MURDER BLUES / A FILMS OF RECORD PRODUCTION	
	07 ROLF ON ART – THE BIG EVENTS / A BBC PRODUCTION	